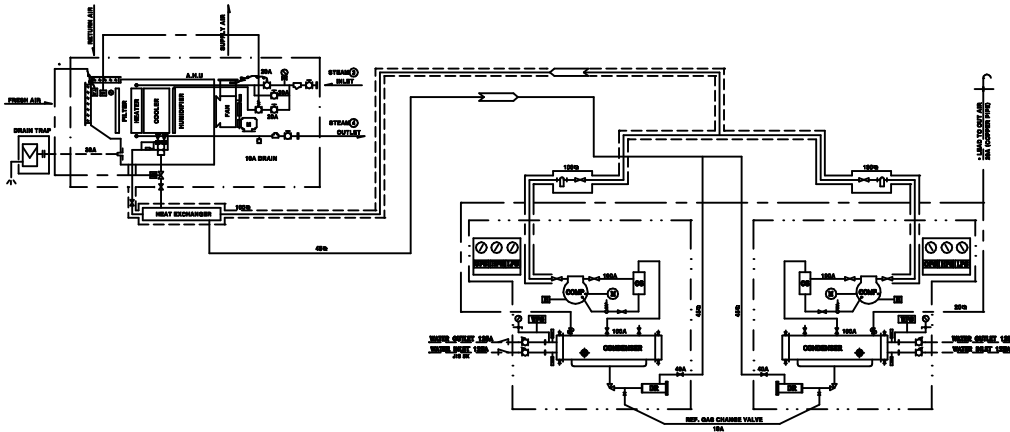




# AIR HANDLING UNIT -2-

## HVAC Ping Diagram



### NOTE : PIPE CONNECTION

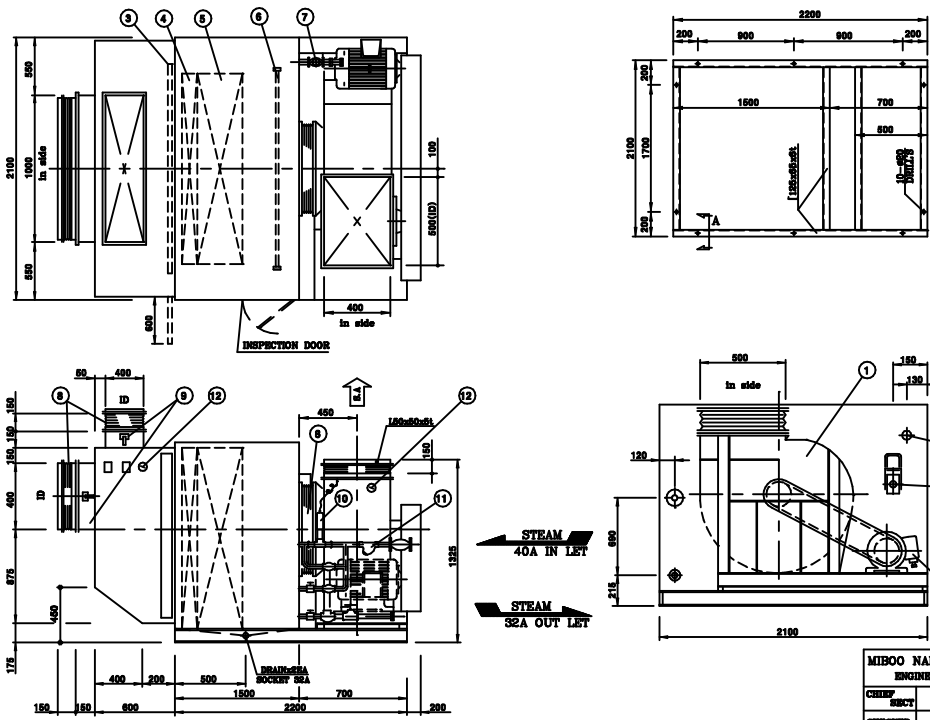
1. COOLING WATER INLET : JIS 18K/40F 158A FLANGE
2. COOLING WATER OUTLET : JIS 18K/40F 158A FLANGE
3. STEAM INLET : JIS 18K/40F 40A FLANGE
4. STEAM OUTLET : JIS 18K/40F 20A FLANGE
5. CHAMBER DRAIN SOCKET : PT 1"
6. R-12 APPROX. : 1 kg
7. COOLING WATER CONSUMPTION 118 m<sup>3</sup>/h

| SOLENOID VALVE         | EVR-40        | ARTICLES |
|------------------------|---------------|----------|
| THERMO EXPANSION VALVE | TEX55-85      |          |
| HEAT EXCHANGER         | HEX-2200      |          |
| WATER PRESS. SWITCH    | SWP-C100      |          |
| SAFETY VALVE           | 200G/45       |          |
| HIGH PRESS. SWITCH     | F70CA-62      |          |
| OIL PRESS. SWITCH      | MP-55         |          |
| BUTTERFLY VALVE        | 125A - JIS BK |          |
| AIR CON FAN            | SW 22 PLR     |          |
| CONDENSER              | CLS-4822L     |          |
| AIR CON FAN MOTOR      | 18.5KW - 4P   |          |
| DRYER FILTER           | D110-40A      |          |
| OIL SEPARATOR          | NOB-20        |          |
| COMP. MOTOR            | 83KW - 4P     |          |
| COMPRESSOR             | SH120         |          |

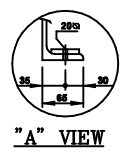
|                        |  |
|------------------------|--|
| MIBOO NAMIREI CO., LTD | MESSRS. HYUNDAI MIPO DOCK YARD CO., LTD. |
| ENGINEERING DEPT       | H.9601~H.9606                            |
| DATE                   | 1997. 4                                  |
| SCALE                  | N/S                                      |
| REV. No.               | AC08                                     |

### PIPING DIAGRAM FOR AIR CONDITIONING PLANT

## HVAC Air Handling Unit



| NO | DESCRIPTION      | TYPE           |
|----|------------------|----------------|
| 12 | TEMP.            | DAI. TYPE      |
| 11 | STRAINER         | JIS 18K/40A    |
| 10 | STEAM REG. VALVE | 220-5530-20A   |
| 9  | DAMPER           | M.B-S/D        |
| 8  | CANVAS           | M.B-S/D        |
| 7  | SOLENOID VALVE   | EVR-40         |
| 6  | HUMIDIFIER       | DIS-C1070      |
| 5  | COOLER           | CROOS FIN COIL |
| 4  | HEATER           | CROOS FIN COIL |
| 3  | AIR FILTER       | M.B-S/D        |
| 2  | FAN MOTOR        | 18.5KW - 4P    |
| 1  | AIR-CON FAN      | SW 22 PLR      |

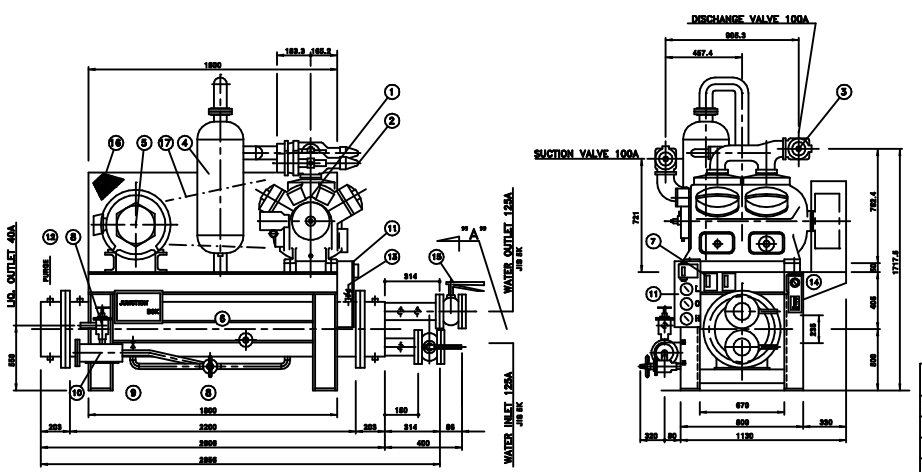


NOTE  
 \* DETAIL OF STEAM VALVE PANEL  
 SEE ATTACHED YDWG

|                        |  |
|------------------------|--|
| MIBOO NAMIREI CO., LTD | MESSRS. HYUNDAI MIPO DOCK YARD CO., LTD. |
| ENGINEERING DEPT       | H.9601~H.9606                            |
| DATE                   | 1996. 7. 1                               |
| SCALE                  | N/S                                      |
| REV. No.               | AC28                                     |

### AIR HANDLING UNIT MODEL : NAHU-1802

## HVAC Condensing Unit



| SPECIFICATION      |                       |
|--------------------|-----------------------|
| COMP. MODEL        | SH120                 |
| COOLING CAPACITY   | 314,000Kcal/h         |
| CONDENSING TEMP    | 43.3 . C              |
| EVAPORATING TEMP   | 5.6 . C               |
| NO. OF CYLINDER    | 12                    |
| BORO               | 82.6 mm               |
| STROKE             | 68.85 mm              |
| R.P.M              | 1418 r.p.m            |
| MOTOR              | 83kw - 4p             |
| CONDENSER MODEL    | CLS-4822L             |
| COOL. SURFACE AREA | 19.1 m <sup>2</sup>   |
| WATER FLOW         | 118 m <sup>3</sup> /h |

| NO | DESCRIPTION         | TYPE          |
|----|---------------------|---------------|
| 17 | V-BELT              | 8C-TYPE       |
| 16 | BELT COVER          | M.B-S/D       |
| 15 | BUTTERFLY VALVE     | 125A - JIS BK |
| 14 | PRESS. GAUGE/SWITCH | WATER SIDE    |
| 13 | SAFETY VALVE        | 15A           |
| 12 | AIR PURGE VALVE     | 15.9S CUT     |
| 11 | GAUGE PANEL         | M.B-S/D       |
| 10 | DRYER FILTER        | 40A           |
| 9  | R-22 CHARGE VALVE   | 6.3S G CUT    |
| 8  | STOP VALVE          | 40A           |
| 7  | PRESSURE SWITCH     | HP.LP & OP    |
| 6  | CONDENSER           | CLS-4822L     |
| 5  | MOTOR               | 83KW - 4P     |
| 4  | OIL SEPARATOR       | NOB-20        |
| 3  | DISCHARGE VALVE     | 100S          |
| 2  | SUCTION VALVE       | 100S          |
| 1  | COMPRESSOR          | SH120         |

|                        |  |
|------------------------|--|
| MIBOO NAMIREI CO., LTD | MESSRS. HYUNDAI MIPO DOCK YARD CO., LTD. |
| ENGINEERING DEPT       | H.9601~H.9606                            |
| DATE                   | 1997. 4.                                 |
| SCALE                  | N/S                                      |
| REV. No.               |  |

### CONDENSING UNIT MODEL : ACU-9002

